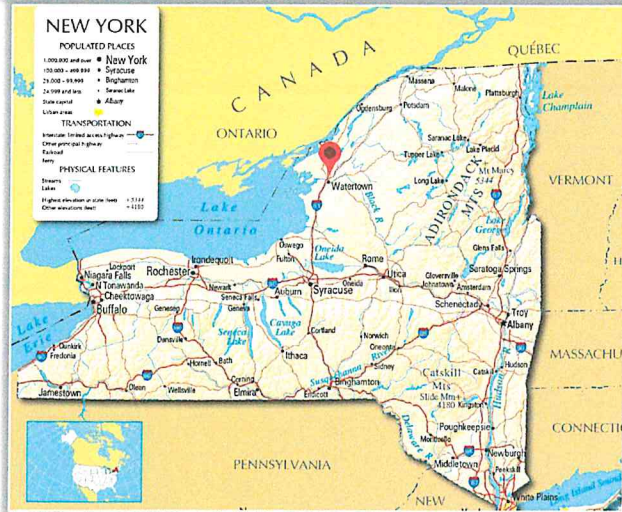


FOR SALE OR LEASE | COMMERCE PARK

NYS Route 12/Bradley Street and Lucas Drive, Pamela, New York



COMMERCIAL REAL ESTATE SALES | LEASING | CONSULTING | DEVELOPMENT | MANAGEMENT



PROPERTY HIGHLIGHTS

Available: 8 Sites- NYS Build Ready sites ranging 3 to 12 acres

Parcel Size: 54 ± acres

Zoning: Light Industrial

Tax Parcel ID: 74.17-1-27.21

Sale Price: TBD

Lease Price: TBD

Comments: Bradley Commerce Park is a 54 ± acre commercial development by Watertown's premier developer. 8 sites available for build-to-suit, sale or lease. Fully served by public utilities. Located on Lucas Drive and Bradley Street/NYS Route 12 & adjacent to Interstate Route 81 at exit 47. Current businesses are United Parcel Service, Caprara Honda and soon Caprara Kia. Minutes from Downtown Watertown & Fort Drum. 30 minutes from the Canadian Border. Potential Rail sidings available.

READY TO MAKE A DEAL? CLICK HERE NOW!



Patrick V. Agen
 Licensed Associate Real Estate Broker
 315.736.1555 x 304
pvagen@PaviaRealEstate.com



5 Oxford Road
 New Hartford, New York 13413

151 Northern Concourse
 Syracuse, New York 13212

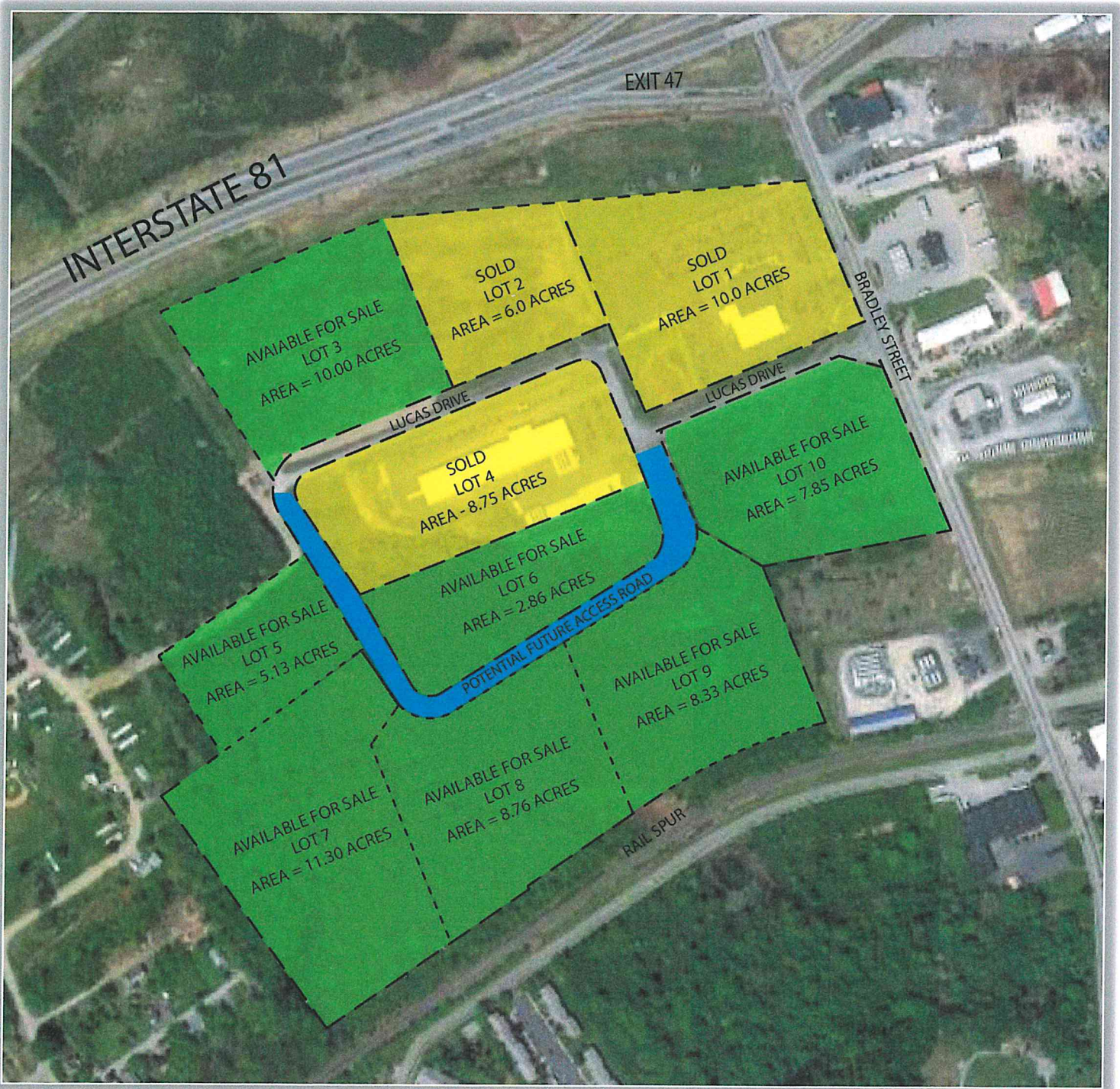
PaviaRealEstate.com
 MAIN: 315.736.1555

FOR SALE OR LEASE | COMMERCE PARK

NYS Route 12/Bradley Street and Lucas Drive, Pamelaia, New York



COMMERCIAL REAL ESTATE SALES | LEASING | CONSULTING | DEVELOPMENT | MANAGEMENT



5 Oxford Road
New Hartford, New York 13413

151 Northern Concourse
Syracuse, New York 13212

PaviaRealEstate.com
MAIN: 315.736.1555